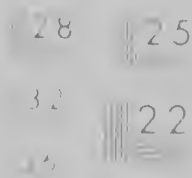
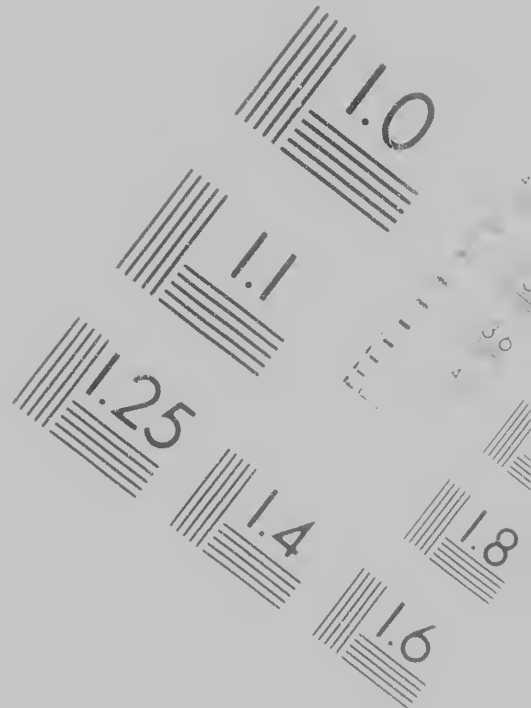


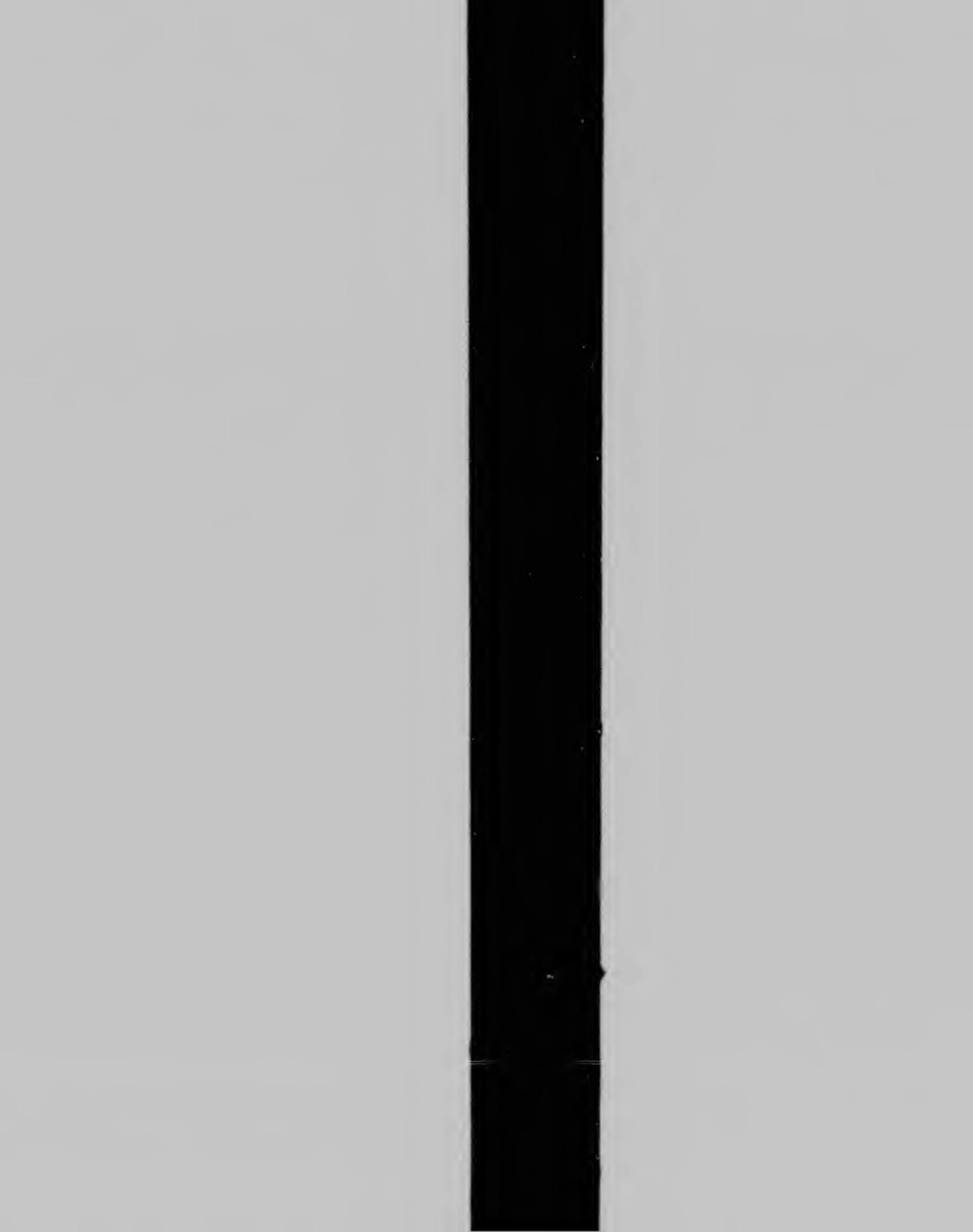
# IMAGE EVALUATION TEST TARGET (MT-3)



28  
25  
22  
20

**CIHM/ICMH  
Microfiche  
Series.**

**CIHM/ICMH  
Collection de  
microfiches.**



Technical and Bibliographic No

The Institute has attempted to obtain the best original copy available for filming. Features of this copy which may be bibliographically unique, which may alter any of the images in the reproduction, or which may significantly change the usual method of filming, are checked below.

- Coloured covers/  
Couverture de couleur
- Covers damaged/  
Couverture endommagée
- Covers restored and/or laminated/  
Couverture restaurée et/ou pelliculée
- Cover title missing/  
Le titre de couverture manque
- Coloured maps/  
Cartes géographiques en couleur
- Coloured ink (i.e. other than blue or black)/  
Encre de couleur (i.e. autre que bleue ou noire)

es/Notes techniques et bibliographiques

L'Institut a microfilmé le meilleur exemplaire qu'il lui a été possible de se procurer. Les détails de cet exemplaire qui sont peut-être uniques du point de vue bibliographique, qui peuvent modifier une image reproduite, ou qui peuvent exiger une modification dans la méthode normale de filmage sont indiqués ci-dessous.

Coloured pages/  
Pages de couleur

Pages damaged/  
Pages endommagées

Pages restored and/or laminated/  
Pages restaurées et/ou pelliculées

Pages discoloured, stained or foxed/  
Pages décolorées, tachetées ou piquées

Pages detached/  
Pages détachées

Showthrough/  
Transparence

The copy filmed here has been reproduced thanks to the generosity of:

Library of Congress  
Photoduplication Service

The images appearing here are the best quality possible considering the condition and legibility of the original copy and in keeping with the filming contract specifications.

Original copies in printed paper covers are filmed beginning with the front cover and ending on the last page with a printed or illustrated impression, or the back cover when appropriate. All other original copies are filmed beginning on the first page with a printed or illustrated impression, and ending on the last page with a printed or illustrated impression.

L'exemplaire  
générosité

Les images  
plus grande  
de la netteté  
conforme  
filmage

Les exemplaires  
papier et  
par le p  
dernière  
d'impre  
plat, se  
original  
première  
d'impre  
la dernière  
empreinte

Exemplaire filmé fut reproduit grâce à la  
coblité de:

Library of Congress  
Photoduplication Service

Pages suivantes ont été reproduites avec le  
grand soin, compte tenu de la condition et  
de l'état de l'exemplaire filmé, et en  
conformité avec les conditions du contrat de

Exemplaires originaux dont la couverture en  
papier est imprimée sont filmés en commençant  
par le premier plat et en terminant soit par la  
première page qui comporte une empreinte  
de l'impression ou d'illustration, soit par le second  
plat selon le cas. Tous les autres exemplaires  
sont filmés en commençant par la  
première page qui comporte une empreinte  
de l'impression ou d'illustration et en terminant par  
le dernier plat qui comporte une telle  
empreinte.







A

V

Co  
Po  
jac  
wi  
to  
Ri  
Co  
m  
pr  
hi  
to

*An ACT to restrain the sending of Provisions  
to Cape-Breton, or any other French Port or Settle-  
ment, on the Continent of North-America,  
and Islands nigh or adjacent thereto.*

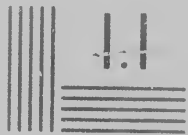
**W**HEREAS the General Assembly have been well informed,  
there is, and for some Time past has been, a very pernicious  
Trade carried on from hence, and some other of the Northern  
Colonies, to *Louisbourg*, on the Island of *Cape-Breton*, and other French  
Ports and Settlements on the Continent of *North-America*, and Islands  
adjacent thereto. By Means whereof the *French* there have been supplied  
with great Quantities of Flour, and other Provisions, and thereby enabled  
to furnish and provide *Canada*, and their Forces at *Crown-Point*, and on  
the River *Ohio*, with the same; which greatly assists and puts them in a better  
Condition to pursue, carry on, and support themselves in their Encroach-  
ments on his Majesty's Territories: Which, unless timely prevented,  
will prove to be of very fatal and dangerous Consequence to this and all  
his Majesty's Northern Colonies in *America*, and at this Time loudly  
requisite for Redress. Wherefore



28 2.5

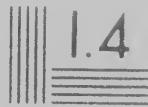
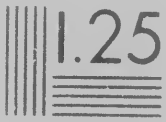
32 2.2

36

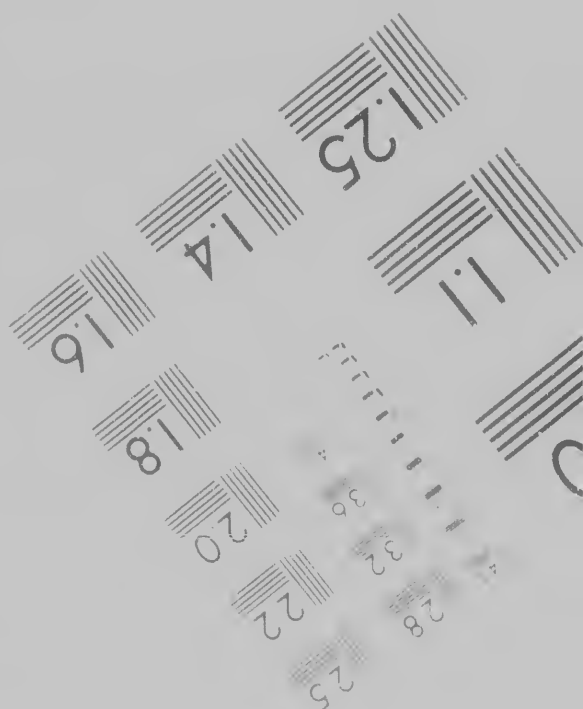


2.0

1.8



6"



Photographic  
Sciences  
Corporation

23 WEST MAIN STREET  
WEBSTER, N.Y. 14580  
(716) 872-4503



Canadian Institute for Historical Microreproductions /

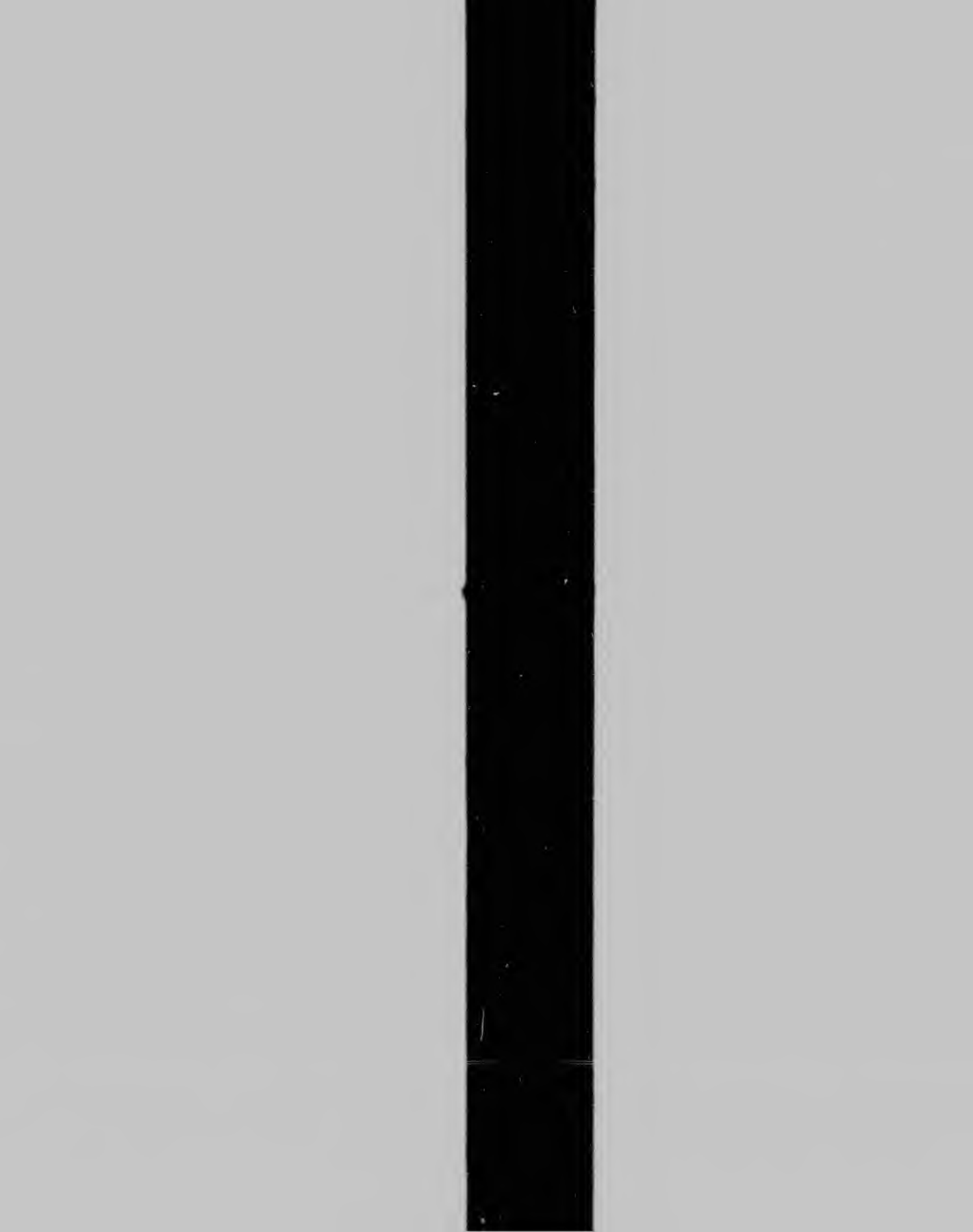
© 19





Institut canadien de microreproductions historiques

986





- Coloured maps/  
Cartes géographiques en couleur
- Coloured ink (i.e. other than blue or black)/  
Encre de couleur (i.e. autre que bleue ou noire)
- Coloured plates and/or illustrations/  
Planches et/ou illustrations en couleur
- Bound with other material/  
Relié avec d'autres documents
- Tight binding may cause shadows or distortion  
along interior margin/  
La reliure serrée peut causer de l'ombre ou de  
distorsion le long de la marge intérieure
- Blank leaves added during restoration may  
appear within the text. Whenever possible, they  
have been omitted from filming/  
Il se peut que certaines pages blanches ajoutées  
lors d'une restauration apparaissent dans le texte  
mais, lorsque cela était possible, ces pages n'ont  
pas été filmées.
- Additional comments: / CIHM no. 603  
Commentaires supplémentaires

This item is filmed at the reduction ratio checked below  
Ce document est filmé au taux de réduction indiqué ci-dessous

10X

14X

18X

--	--	--	--	--	--	--	--	--	--	--

12X

16X

20X

Pages detached/  
Pages détachées

Showthrough/  
Transparence

Quality of print varies/  
Qualité inégale de l'impression

Includes supplementary material/  
Comprend du matériel supplémentaire

Only edition available/  
Seule édition disponible

Pages wholly or partially obscured by errata  
slips, tissues, etc., have been refilmed to  
ensure the best possible image/  
Les pages totalement ou partiellement  
obscurcies par un feuillet d'errata, une pelure  
etc., ont été filmées à nouveau de façon à  
obtenir la meilleure image possible

a  
se  
es  
te,  
nt

04

low/  
ci-dessous.

22X

26X

30X



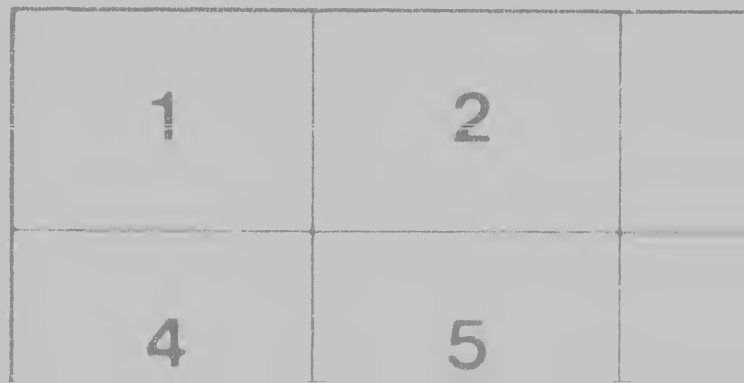
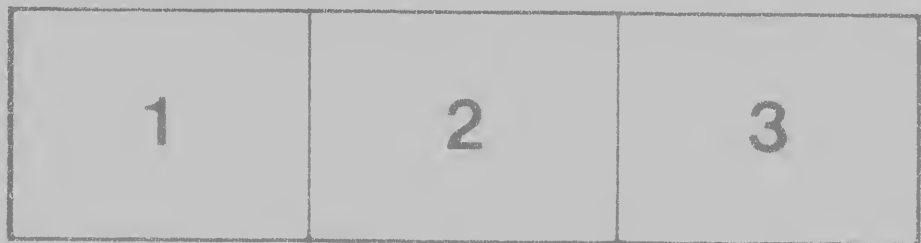
24X

28X

32X

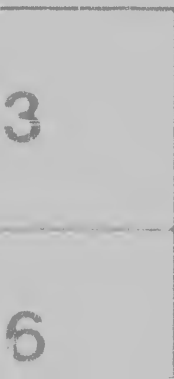
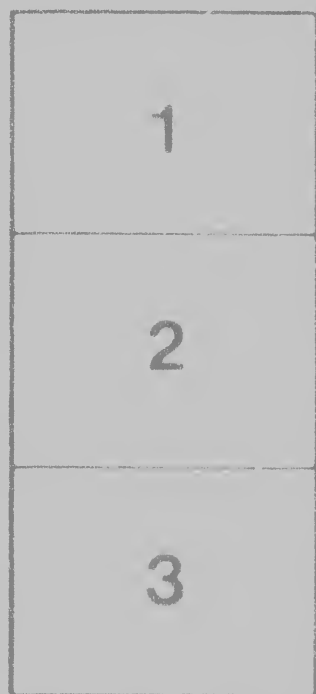
Maps, plates, charts, etc., may be filmed at different reduction ratios. Those too large to be entirely included in one exposure are filmed beginning in the upper left hand corner, left to right and top to bottom, as many frames as required. The following diagrams illustrate the method:

Les cart  
filmés à  
Lorsque  
reprodu  
de l'ang  
et de ha  
d'image  
illustrer



es, planches, tableaux, etc., peuvent être  
des taux de réduction différents.

le document est trop grand pour être  
it en un seul cliché, il est filmé à partir  
le supérieur gauche, de gauche à droite,  
ut en bas, en prenant le nombre  
s nécessaire. Les diagrammes suivants  
t la méthode.







Co  
me  
pro  
his  
ton

the  
for  
T  
th  
by  
is  
A  
ge  
fu  
Fr  
in  
th  
de  
Pr  
Fr  
Co  
T  
fu  
in  
w  
E

Pu

*Province of  
New York*

in addition to pursue, carry on, and support themselves in their Encroachment  
rights on his Majesty's Territories: Which, unless timely prevented, will  
prove to be of very fatal and dangerous Consequence to this and all of  
his Majesty's Northern Colonies in *America*, and at this Time loudly  
Redress. Wherefore,

**Be it Enacted** by his Honour the Lieutenant Governor, the Council, and  
General Assembly, and it is hereby Enacted by the Authority of the same,  
discouraging, restraining, and detecting such dangerous and pernicious  
Trade as far as possible, in this Time of imminent Danger, His Honour  
the Lieutenant Governor, or the Commander in Chief for the Time being,  
and with the Advice and Consent of his Majesty's Council, shall be,  
hereby fully empowered and authorized, by Proclamation or other public  
authority, to forbid, restrain, and as much as may be, prevent such  
dangerous and pernicious Trade and Commerce with the *French*; by laying  
such reasonable Penalties, Fines and Restrictions on the Owners, Factors,  
Freighters, and Masters of Vessels using such Trade, or otherwise offending  
against the Premises, as shall be thought just, reasonable and expedient, according  
to the Nature and Circumstances of the Case may require: And also to detect,  
arrest, and bring to Justice, the Offender or Offenders, and to commit  
to Prison, any Master or Commander, of any Ship or Vessel, Owner, Factor,  
Freighter, Mariner, or any other Person or Persons, who upon reasonable  
Command or Request, shall refuse or neglect to appear, swear and give  
Testimony concerning the same, until he, she or they, shall swear and give  
such Testimony. All which Penalties shall and may be sued for, and recovered  
in any Court of Record within this Colony, by the Informer or Informers,  
who may sue and prosecute for the same, for their own use, as an  
encouragement to give such Information.

THIS ACT to continue in Force for the Space of Four Months after  
the Publication thereof, and no longer.

*As the preceding is a true copy of the Act of*



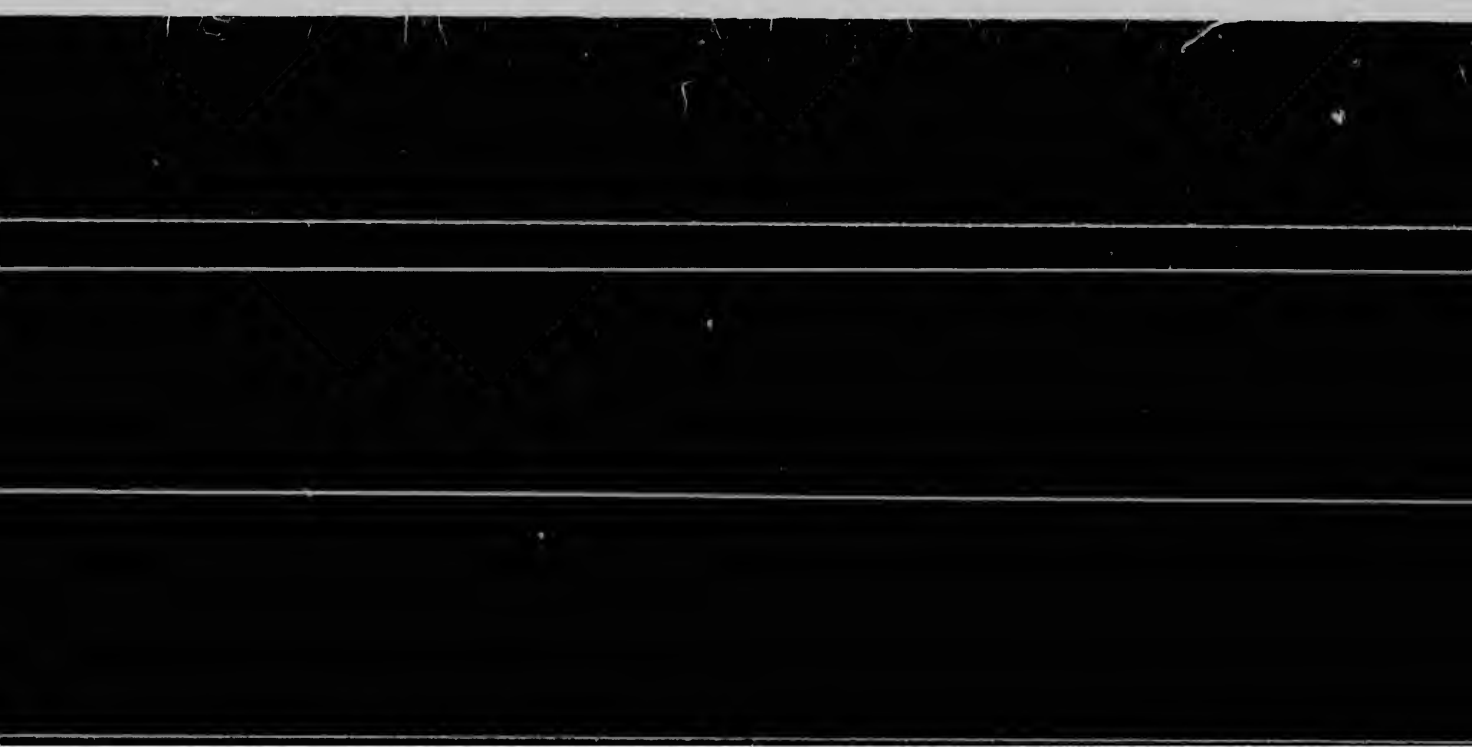
# Photographic Sciences Corporation

23 WEST MAIN STREET  
WEBSTER, N.Y. 14580  
(716) 872-4503

22  
28  
25

©

R







12X

16X

20X

22X

26X

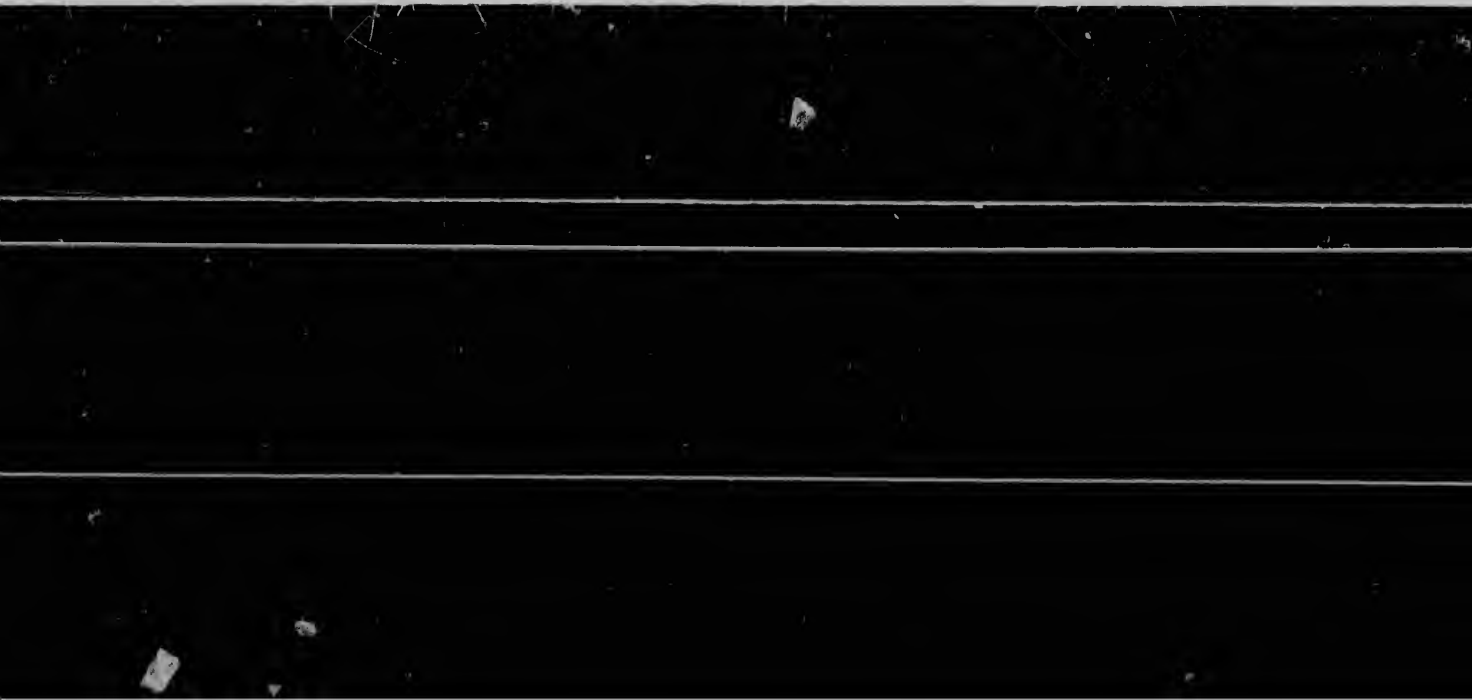
30X



24X

28X

32X



4	5	









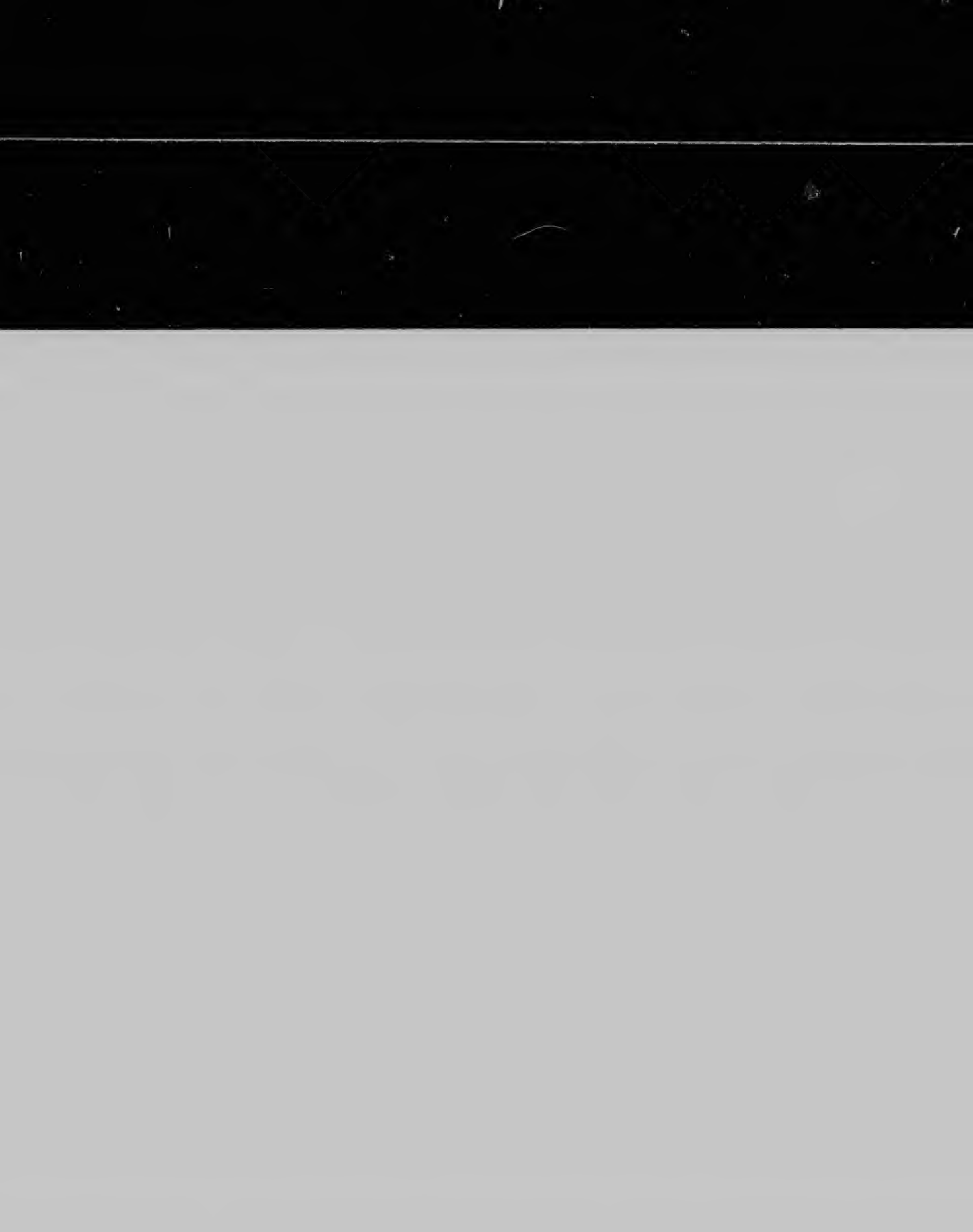
Travels in  
New York

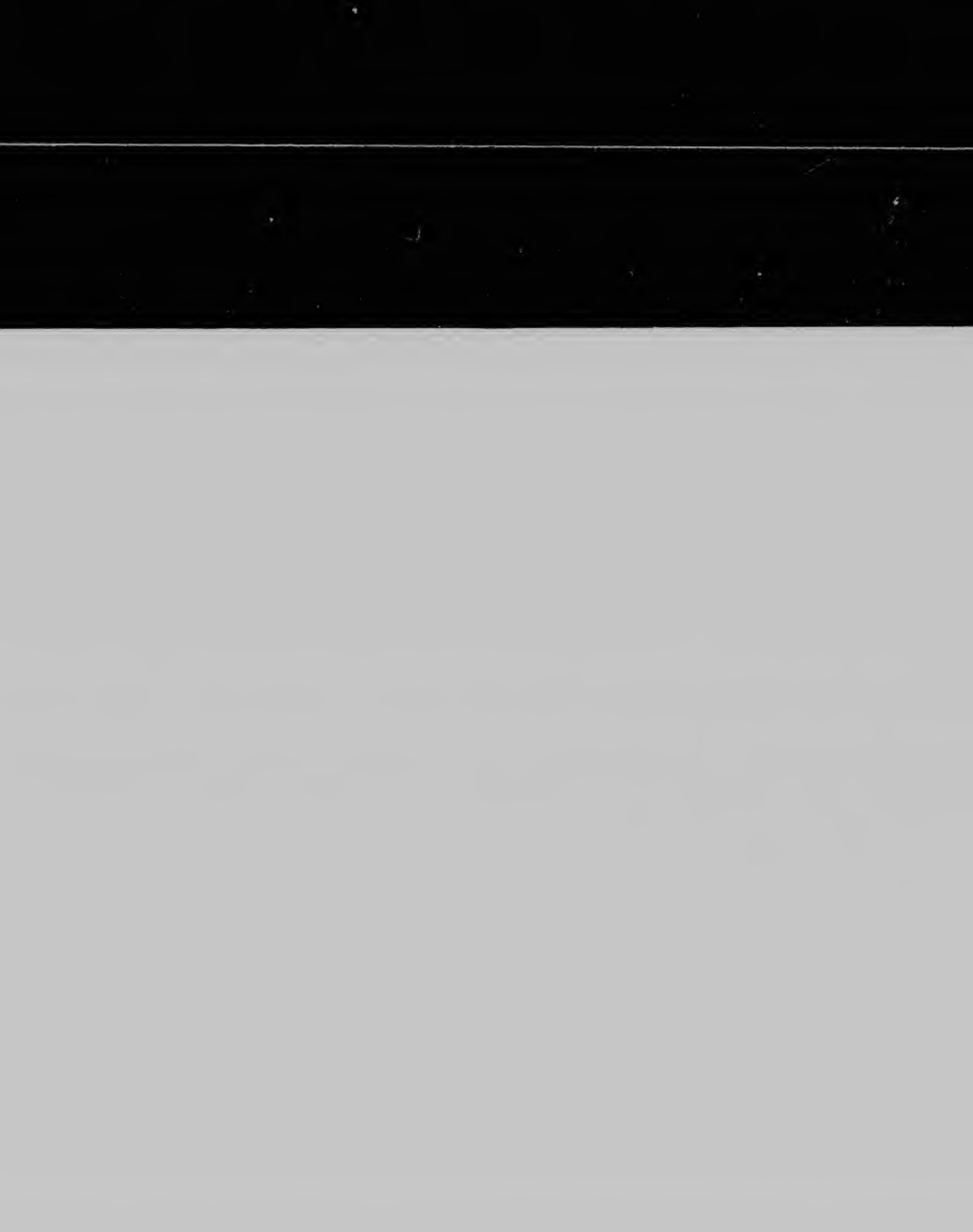
publication thereof, and no longer.

The preceding is a true copy of the Act of  
Legislation of the said Province passed and  
the same was read of February 1793 in the  
house of Representatives of the said Province

By \_\_\_\_\_  
W. L. H. \_\_\_\_\_





























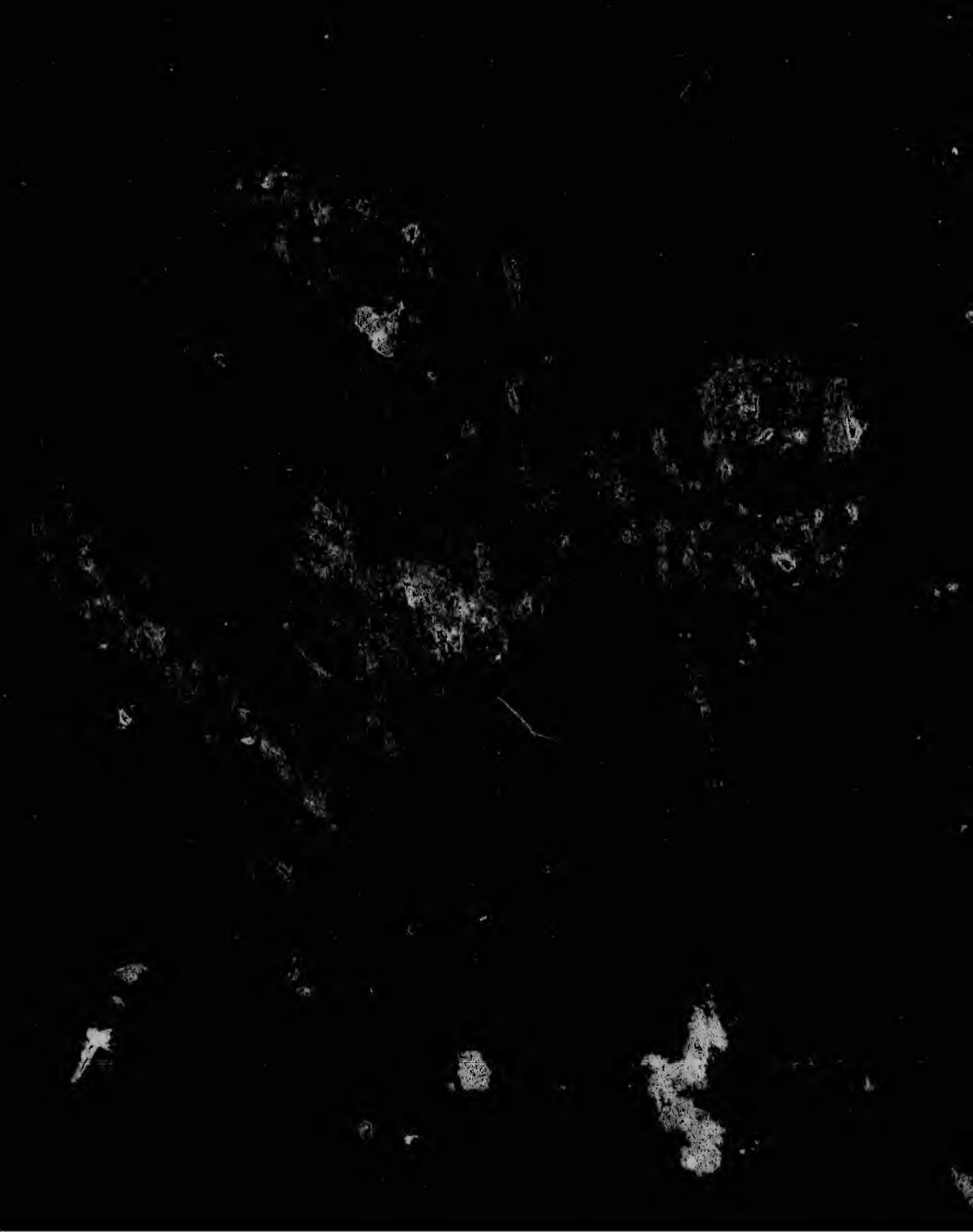
19  
20

Miss Gresham  
111





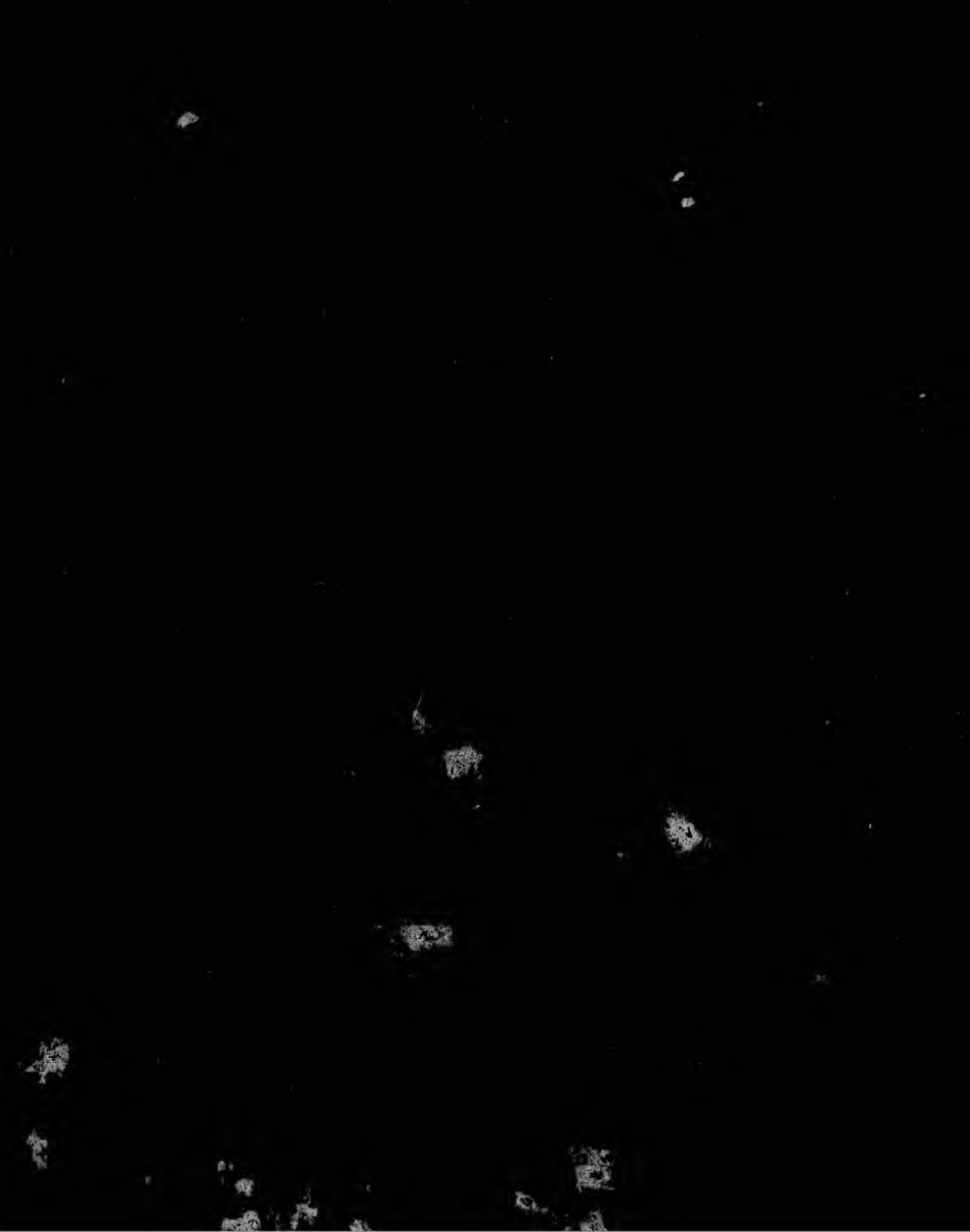


















1000

Norths Acto.  
1753

...





















